

26F GLASS SCREEN

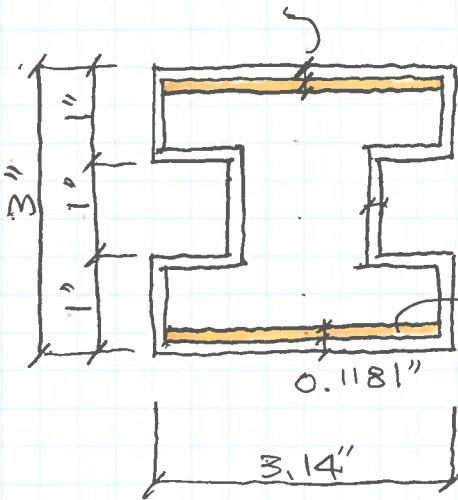
UNIT STRESS : LONG TERM $235 \text{ N/mm}^2 \div 1.5$
(JAPAN)

SHORT TERM 235 N/mm^2

$$235 \text{ N/mm}^2 = 235 \times 25.4 \times 25.4 / (0.454 \times 9.8)$$

$$= 34.076 \times 10^3 \text{ K/IN}^2 \text{ (34 K)}$$

$$1.5^{\text{mm}} + 1.5^{\text{mm}} = 0.1181''$$



$$S = \frac{I}{1.5} = \frac{1}{1.5} \times \frac{1}{12} (3.14 \times 3^3 - 3.029 \times 2.7638^3)$$

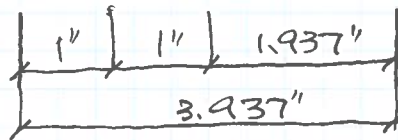
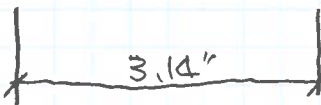
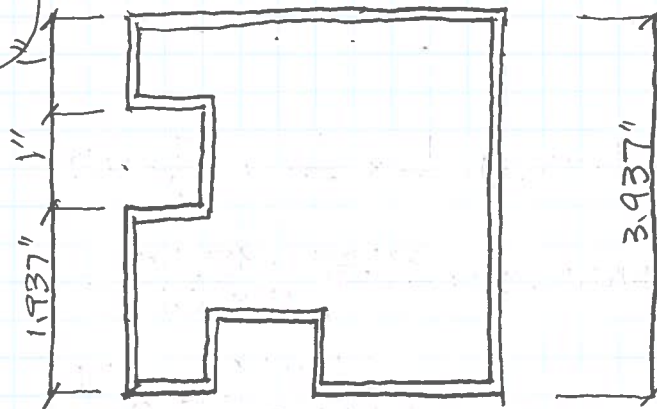
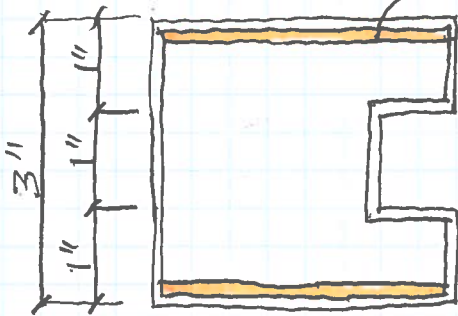
$$= \frac{84.78 - 63.80}{1.5 \times 12} = 1.1655 \text{ IN}^3$$

$$M/S = \frac{2.93 \times 12}{1.1655} = 30.17 \text{ KSI} < 34.076 \text{ KSI}$$

OK.

$H = 250^{\text{mm}}$ (9.843")
FROM THE BOTTOM

$$t = 1.5^{\text{mm}} = 0.0590''$$



100x100

$$S = \frac{I}{1.5} = \frac{1}{1.5} \times \frac{1}{12} (3.937^4 - 3.8189^4) = 1.5308 \text{ IN}^3$$

$$M/S = \frac{1/2 \times 2.93 \times 12}{1.5308} = 11.49 \text{ KSI} < 34.076 \text{ KSI}$$