



City Building Material Co., Ltd.

HIGH SPEED ROLL-UP DOOR

Innovation and Sharing

About CBM 簡介

CBM first introduced convenient, safe and quiet high-speed roll-up doors in 2012, providing customers with a wonderful user experience. These "All-in-One" roll-up doors come in different colors and offer both aesthetic appeal and user-friendliness.

CBM has built a strong foundation in Myanmar with sound management principles. These include consistency in factory manufacturing processes, and standardizing operation standards in order to control product quality.

Such policies, as well as a desire to constantly improve, has enabled CBM to become a leading brand of roll-up door suppliers.

CBM promotes its products through a countrywide distributor DELER network, providing efficient services for our customers.

CBM 公司於2012年首創引進便利、安全、安靜的高品質快速捲門，提供貴賓們愉悅的操作感受，及多種門板色系可供選擇，打造美麗又人性化「All In One」的捲門。

CBM 以穩健踏實的經營理念在緬甸紮根茁壯，工廠製造全程一貫化、作業標準化，以有效控管產品品質，並且不斷精益求精，才能使CBM成為捲門界的領導品牌。CBM以經銷商體制推廣公司的產品到全國，為我們廣大的貴賓們來服務。

Corporate Commitment 企業承諾

Customer satisfaction, outstanding execution and integrity are our core principles in business conduct.

「客戶滿意」、「卓越的執行力」與「誠信」，是我們遵循的原則與最高的經營價值。

Product Characteristics

- Fast and silent : the speed of door roll up is several times faster than that of traditional roll-up doors, silent operation and low noise production.
- Safe : automated rebound and anti-pressure design, auto switch to manual operation in the event of a power shortage.
- Durable : strong and durable plastic-steel reel, densely woven silencer, balance spring made of high quality steel.
- Easy to use and durable, an array of colors for selection and matching.

產品特色：

快速安靜：捲門動作速度較傳統捲門快數倍，運轉安靜、低噪音。

安全性：自動反彈防壓設計，停電時，切換手動開關，可輕鬆開關門。

耐用性：強韌耐磨塑鋼捲軸，高密度編織消音帶，高規鋼質平衡彈簧。

使用性：經巧方便，且多種門板色系可供選擇及搭配。



Application

Our roll-up doors can be used in various industries and for different purposes such as shophouses, shopping centers, hotels, schools, car garages and factories. They can also enhance the aesthetics of your beloved house.

適用場所：

我們的捲門適用在於各行各業，例如：住家/店面/辦公門/銀行/學校/醫院/工廠/大樓車道/別墅車道等。

Galvanized Steel High Speed Roll-Up Door 鍍鋁鋅捲門

Steel plate characteristics :

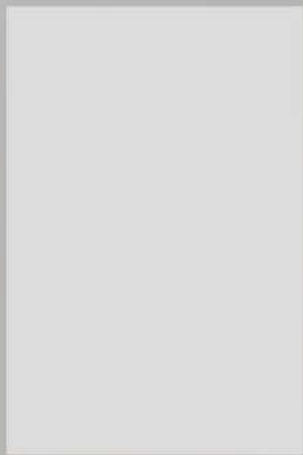
Uses color galvanized steel with a raw materials strength ratio that complies with international standards. A unibody door plate made of high-quality color-galvanized steel with a streamlined design exhibiting aesthetic appeal, firmness, and anti-rust characteristics. It comes in an array of colors for selection and matching, exuding class, practicality and quality.

鋼板特性：

採用國際標準等級彩色鍍鋁鋅鋼板，鋼板基材強度符合國際標準。
一體成型之門板，採用高品質之彩色鍍鋁鋅鋼板，門板流線造型設計，
美觀、堅固、防銹，多種顏色可供配色，大方、實用、質感佳。

Door Color 門板顏色：

CBM-01 White



CBM-02 Cream



CBM-03 Green



CBM-04 Brown



User-friendly electronic roll-up door system, smart, fast and safe

人性化電動捲門系統、智慧型快速安全



Aluminum Shutter High Speed Roll-Up Door 鋁合金捲門

Characteristics :

Adopts Japan's JIS Industrial Standards and molded with aluminum alloy. The roll-up door is powder coated on the surface so is anti-scratch and thicker than typical roll-up doors.

It boasts a diversity of aesthetic colors, is durable and complements your front door design.

特性：

採用日本工業JIS標準，鋁合金材質鋁擠成型，表面採用粉體塗裝處理，可防刮傷，厚度甚於一般捲門，顏色多樣美觀，耐用，可搭配門面。



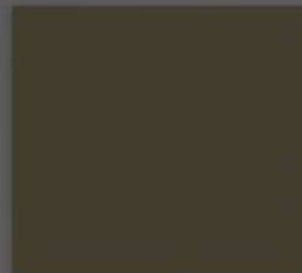
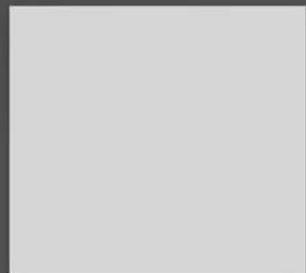
Door Color 門板顏色：

CBM-01 White

CBM-04 Jasper

CBM-07 Paperbark

CBM-08 Dark Grey



Aluminum-PC Shutter High Speed Roll-Up Door 透光式鋁合金捲門

Characteristics :

POLYCARBONATE (PC) is able to withstand impact and allows light to flow through the interior, thereby reducing lighting needs. It can be used in shops to enhance product visibility which achieves excellent display effects.

特性：

POLYCARBONATE(簡稱PC), 其耐衝擊性佳，可讓室內光線充足，減少開燈需求，適用於商店，可讓產品透明化，達到廣告最佳效果。



控制箱 Control Box

The door is silent, safe, and faster than traditional doors.
It has a silent mode DC driven design.
Automated lighting which turns on when the door rolls up/down.

快速無聲·直流驅動靜音設計·比一般門快速。
自動照明·開關捲門時同步自動照明。



啟動組 Drive Unit

Hidden motor. Safe, seamless and silent when in operation.

隱藏式馬達·運轉安全順暢無噪音。



遙控器 Remote

Rolling code design, anti-theft and power-off functions
Contemporary design, quality feel, equipped
with a sliding cover to prevent mispresses

滾碼式設計·防盜拷·具斷電功能。
造型時尚·質感精緻·滑蓋設計防止誤觸。



手拉線 Manual Switcher

Switchable to manual operation in the event of a power shortage

在停電時·可轉換成手動開關模式。



門鎖 Lockset

Based on ergonomic design principles, special installation, safe

符合人體工學設計·特殊安裝·安全。



Industrial Door Systems



Butzbach Upward-acting Stacking Door

Max size : W 15000 x Ht 24000

- Features :
- > Very solid large door
 - > Heat & Sound Insulation
 - > Comfortable daylight emission

High Security Shutter

Max size : W 5000 x Ht 4500

- Features :
- Self-locking security shutter designed for high security applications like armoury, arms and ammunition issuing counters of military and police stations, etc.



Butzbach Novosprint Bi-parting High Speed Door

Max size : W 4500 x Ht 4500

(double-skin)
W 9000 x Ht 6000
(single-skin)

- Features :
- > Very high opening speed
 - > Thermal insulation



Swift High Speed Fabric Roll-up Door

Max size : W 5000 x Ht 5000

- Features :
- > Opening & Closing speed of 0.9m/s
 - > With or without transparent vision panel



Sectional Overhead Door

Max size : W 8000 x Ht 5500

- Features :
- > Sandwich door panels offers excellent heat & sound insulation
 - > Option for vision panels & personal access door



(in closed position)



(in open position)

Horizontally-Coiling Shutter

Max size : W 2500 x Lgth 8000

- Application :
- For horizontal openings between floors like attic and basement access, material handling pits, access pits in processing plants, etc.

Industrial Door Systems



Giant Series Extra Large Roller Shutter

Max size : W 14000 x Ht 9000

- Features :
- > For large openings that are beyond the range of conventional shutter designs
 - > Especially useful for higher openings



Alfresco Heavy-duty Steel Roller Shutter with perforated slats

Max size : W 12000 x Ht 7000

- Features :
- > Vision and ventilation
 - > May be fully or partially perforated

Heavy-duty Steel Roller Shutter

Max size : W 12000 x Ht 7000

- Features :
- > Can incorporate integrated passdoor, with or without threshold

Hangar Door Systems

Gliderol Giant Series Hangar Door

Max size : W 30000 x Ht 9000

(Larger sizes upon request)

- Features :
- > Fully automated sliding mullions with safety interlocks
 - > Mullions can slide to the sides to achieve full opening width



Butzbach Sliding Hangar Doors

Max size : Unlimited Width x Ht 30000

- Features :
- > Matching Taildoors available
 - > Windows & passdoors
 - > Fibreglass does not reflect radar
 - > Heat & sound insulation
 - > Comfortable daylight emission



Fire-rated Shutter Systems



FRSC – Non-insulated Fire Shutter

- Max size : W 12000 x Ht 7000
- Features :
- > Up to 4 hrs fire rating
 - > Available with Vision Lites to aid firefighters
 - > Tested to UL 10B, BS 476 Pt 22, NFPA 252 (2008), ASTM E 2074 (00), SS 489:2001, AS 1530.4.2005, MS 1073 Pt 3:1996
 - > Listed with UL, FM Approvals and TUV PSB Singapore



TIFS – Fire Shutters with normal heat insulation

- Max size : W 12000 x Ht 7000
- Features :
- > Up to 4 hrs fire rating
 - > Fire Insulation value : 7 minutes
 - > Radiation flux : 2.8 kW/m2 at 120 mins
4.3 kW/m2 at 240 mins
 - > U Value : 3.25 W/m2°C
 - > Tested to BS 476 Pt 22, SS 489:2001, AS 1530.4.2005, MS 1073:Pt 3:1996
 - > Listed with TUV PSB Singapore



IFS 60/120 & 60/240 – Fire-insulated Shutter

- Max size : W 12000 x Ht 7000
- Features :
- > 2 hrs and 4 hrs fire rating
 - > Fire Insulation value: 60 minutes
 - > Radiation flux: 0.8 kW/m2 at 120 mins
2.24 kW/m2 at 240 mins
 - > Tested to BS 476 Pt 22, SS 489:2001
 - > Listed with TUV PSB Singapore
 - > Singapore Patent No 200905226-7. Patents also lodged in many countries.

MYANMAR SHIP BUILDER COMPANY PROJECTS



Project name: Hangar Door
 Finished date: April, 10, 2014



City Building Material Co., Ltd.
 Yangon | Tel : 0933220643

Production Operations 廠內生產作業



Installation Team 安裝團隊





English



Chinese



City Building Material Co., Ltd.

Add : No.214, Yadanarbon Rd, 144 Quarter, East Industrial Zone 2, South Dagon Tsp, Yangon, Myanmar.

Tel : 099 7265 2248 / 099 7265 2249

E-mail : citybm88@gmail.com